

ROUGH TERRAIN PALLET TRUCK H-2

USER'S GUIDE – SPARE PARTS



INTRODUCTION

- This guide must be considered as part of the machine, and shall then be included when delivered.
- Total or partial copy of this guide is not allowed without CONHERSA's acceptance.
- The information in this guide is based on facts available on site while publication of this information. CONHERSA keeps the rights to make any change without notification at any moment.

SAFETY INSTRUCTIONS

- Do not overload the rough terrain pallet truck (max. 1,500 Kg.).
- Do not change the forks without notifying CONHERSA.
- Keep load well placed between both forks.
- Do not use the pallet truck on heavy slopes.
- Do not lift load only with the nails of the forks.

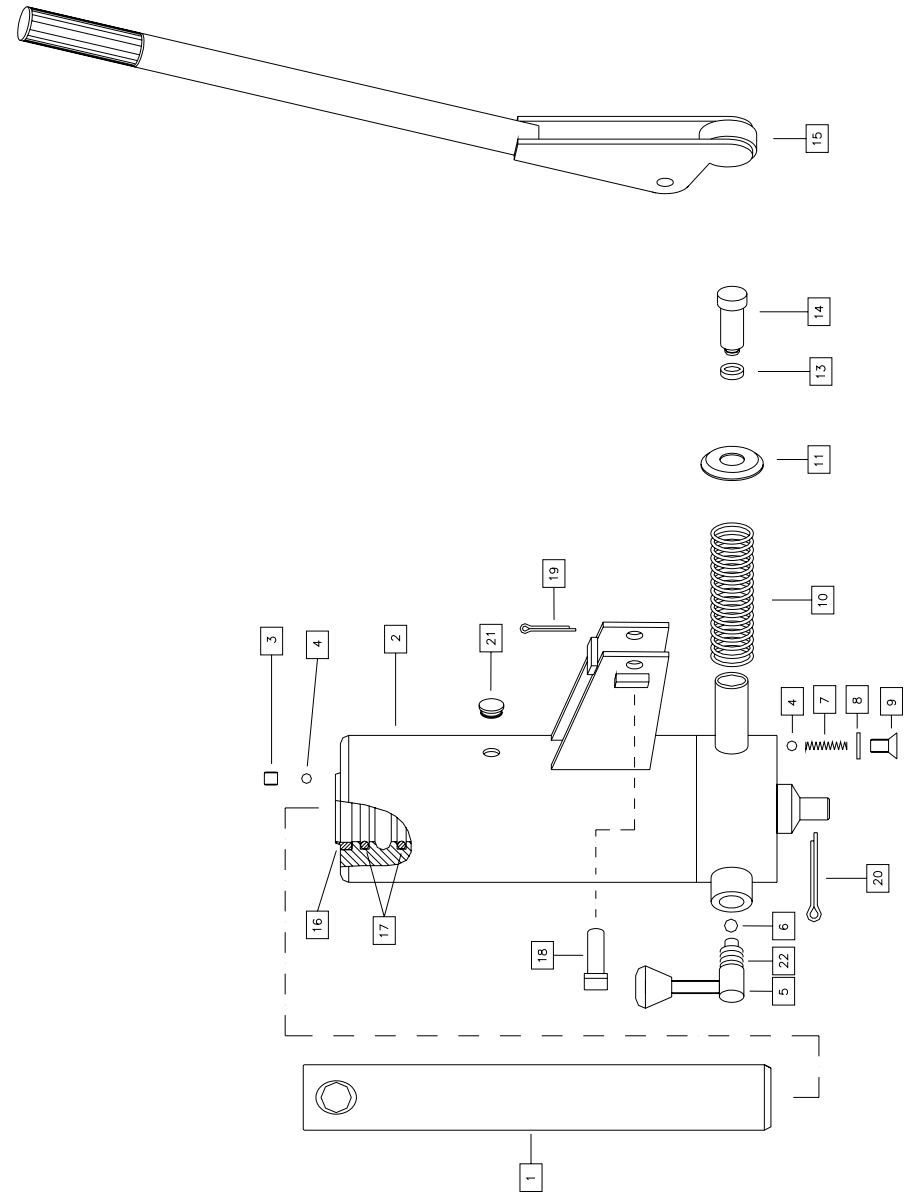
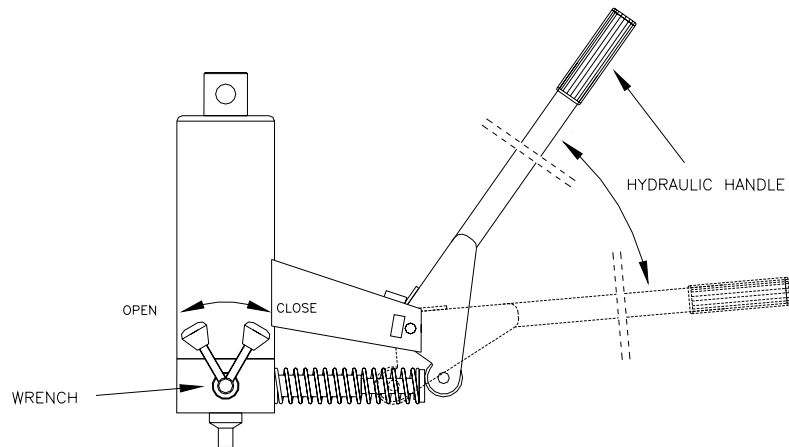
MAINTENANCE

- Verify periodically the hydraulic oil level.
- Use hydraulic oil with a 20-22 viscosity.
- To fill the oil tank, ensure the forks to downwards position, remove cap, pour the oil up to the lowest part of the cap's hole and replace the cap.

OPERATION INSTRUCTIONS

UP: - CLOSE THE WRENCH
- OPERATE THE HYDRAULIC HANDLE

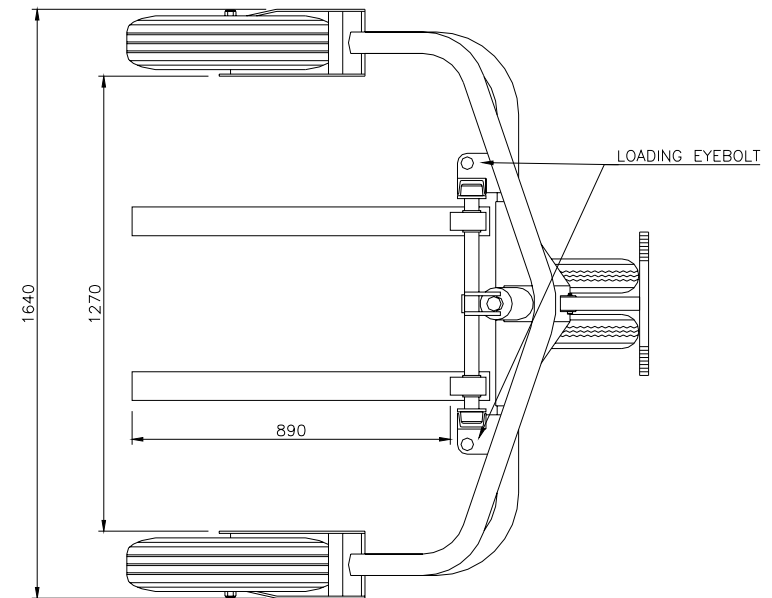
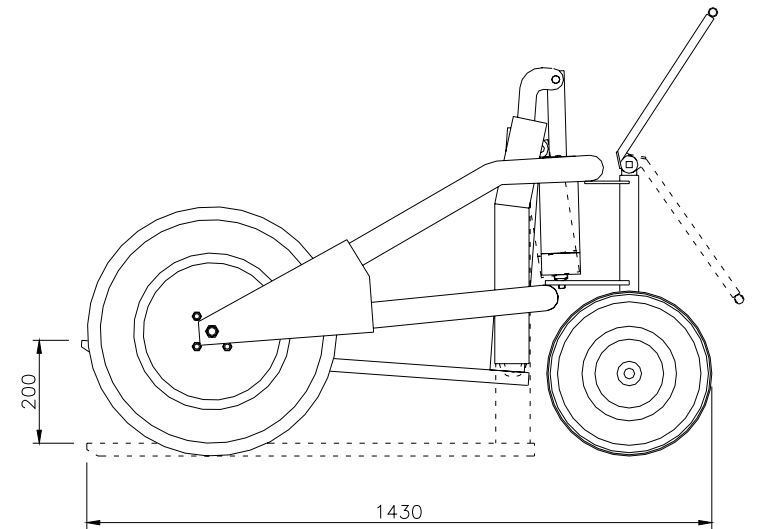
DOWN: - OPEN THE WRENCH



HYDRAULIC OF PALLET TRUCK H-2. SPARE PARTS

| Nº | CODE | DESIGNATION |
|----|--------|-----------------------|
| 1 | 030800 | Piston |
| 2 | 030100 | Hydraulic stiff |
| 3 | 032100 | Prisoner |
| 4 | 031400 | Ball 6 mm. |
| 5 | 030400 | Wrench |
| 6 | 031300 | Ball 8 mm. |
| 7 | 031200 | Spring |
| 8 | 031900 | Washer |
| 9 | 032000 | Screw |
| 10 | 031100 | Spring |
| 11 | 030900 | Protective |
| 13 | 031700 | Towing eye |
| 14 | 030300 | Offset piston |
| 15 | 030200 | Hyd. Handle |
| 16 | 031800 | Scraper |
| 17 | 031500 | O Ring |
| 18 | 032300 | Bolt $\varnothing 10$ |
| 19 | 100000 | Pin 3x30 |
| 20 | 110000 | Pin 5x50 |
| 21 | 032200 | Cap |
| 22 | 031600 | O Ring |

TECHNICAL CHARACTERISTICS



NET WEIGHT: 173 Kg
MAXIMUM LOAD CAPACITY: 1,500 Kg

PALLET TRUCK H-2 SPARE PARTS

| Nº | CODE | DESIGNATION |
|----|--------|-----------------------------------|
| 1 | 360000 | Ring Ø18 |
| 2 | 090000 | Bolt Ø18 |
| 3 | 300000 | Roller |
| 4 | 020000 | Fork grouping |
| 5 | 030000 | Hydraulic |
| 6 | 110000 | Pin 5x50 |
| 7 | 100000 | Pin 3x30 |
| 8 | 320000 | Forks frontwall cover |
| 9 | 060000 | Handle |
| 10 | 032300 | Bolt Ø10 |
| 11 | 160000 | Nut M-12 |
| 12 | 180000 | Screw 12X30 |
| 13 | 010000 | Chassis H-2 |
| 14 | 280000 | Wheel 155-13" |
| 15 | 220001 | Steel axle housing H-2 |
| 16 | 330000 | Self-lubricated bushing |
| 17 | 040000 | Guiding axle |
| 18 | 200000 | Ring Ø25 |
| 20 | 270000 | Wheel 3.50-8" |
| 21 | 050000 | Axle H-2 |
| 22 | 190000 | Auto-locking nut M-18 |
| 23 | 260000 | Separating bushing |
| 24 | 340000 | Self- lubricated bushing with rim |

