

ROUGH TERRAIN PALLET TRUCK NH-1 AND NH-2

USER'S GUIDE – SPARE PARTS



INTRODUCTION

- This guide must be considered as part of the machine, and shall then be included when delivered.
- Total or partial copy of this guide is not allowed without CONHERSA's acceptance.
- The information in this guide is based on facts available on site while publication of this information. CONHERSA keeps the rights to make any change without notification at any moment.

SAFETY INSTRUCTIONS

- Do not overload the rough terrain pallet truck (max. 1,500 kg).
- Do not change the forks without notifying CONHERSA.
- Keep load well placed between both forks.
- Do not use the pallet truck on heavy slopes.
- Do not lift load only with the nails of the forks.

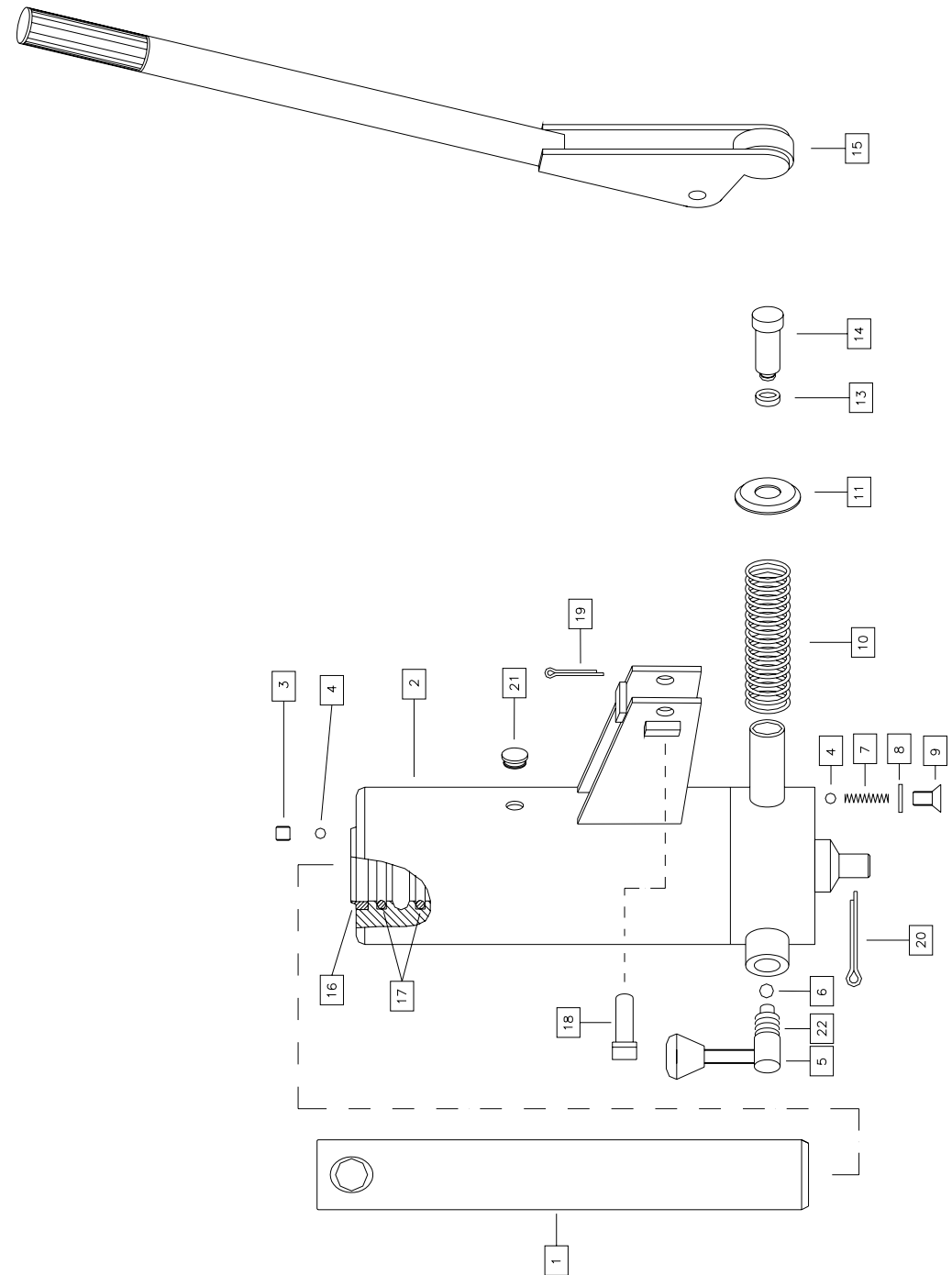
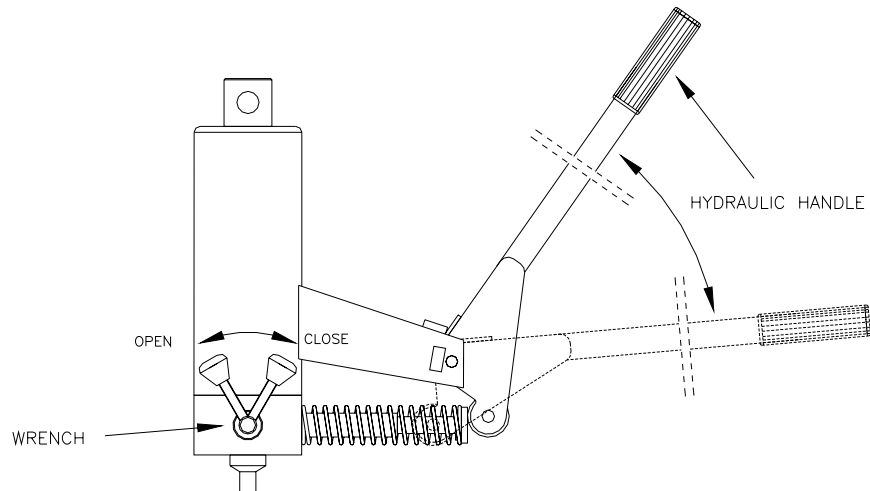
MAINTENANCE

- Verify periodically the hydraulic oil level.
- Use hydraulic oil with a 20-22 viscosity.
- To fill the oil tank, ensure the forks to downwards position, remove cap, pour the oil up to the lowest part of the cap's hole and replace the cap.

OPERATION INSTRUCTIONS

UP: - CLOSE THE WRENCH
- OPERATE THE HYDRAULIC HANDLE

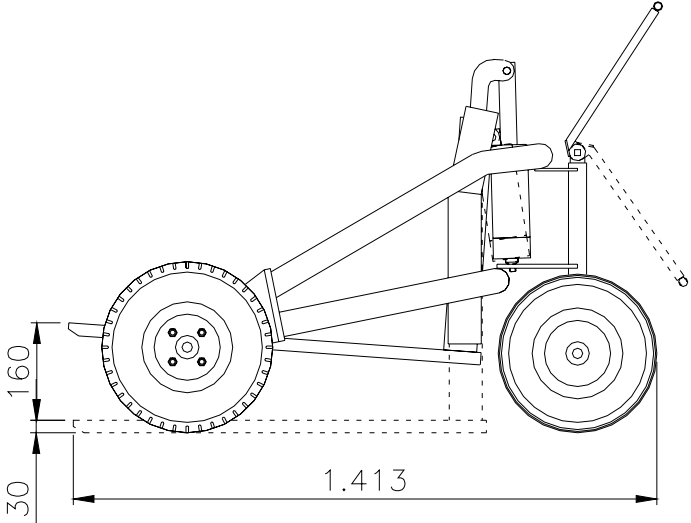
DOWN: - OPEN THE WRENCH



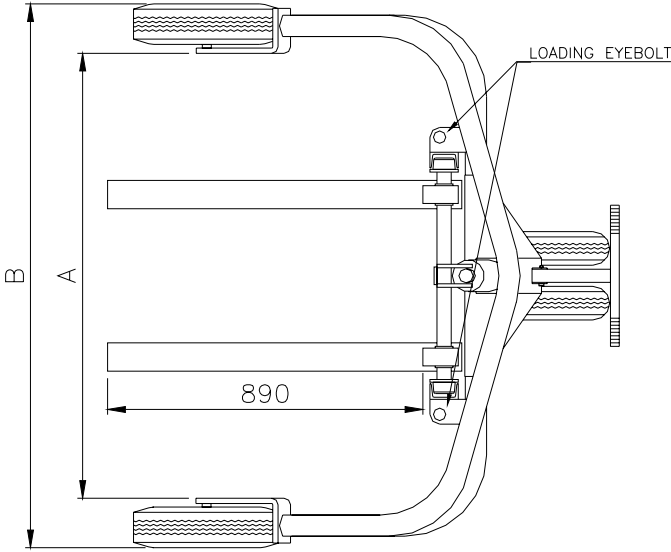
TECHNICAL CHARACTERISTICS

HYDRAULIC OF PALLET TRUCK NH-1 AND NH-2. SPARE PARTS

Nº	CODE	DESIGNATION
1	030800	Piston
2	030100	Hydraulic stiff
3	032100	Prisoner
4	031400	Ball 6 mm.
5	030400	Wrench
6	031300	Ball 8 mm.
7	031200	Spring
8	031900	Washer
9	032000	Screw
10	031100	Spring
11	030900	Protective
13	031700	Towing eye
14	030300	Offset piston
15	030200	Hyd. Handle
16	031800	Scraper
17	031500	O Ring
18	032300	Bolt Ø10
19	100000	Pin 3x30
20	110000	Pin 5x50
21	032200	Cap
22	031600	O Ring



ITEM	INTERIOR MEASUREMENTS (A)	EXTERIOR MEASUREMENTS (B)
HAND PALLET TRUCK NH-1	1.040mm.	1.300mm.
HAND PALLET TRUCK NH-1	1.260mm.	1.520mm.



NET WEIGHT: 173 kg.
 MAXIMUM LOAD CAPACITY: 1.500 kg.

PALLET TRUCK NH-1 AND NH-2 SPARE PARTS

Nº	CODE	DESIGNATION
1	360000	Ring Ø18
2	090000	Bolt Ø18
3	300000	Roller
4	020000	Fork grouping
5	030000	Hydraulic
6	110000	Pin 5x50
7	100000	Pin 3x30
8	320000	Forks frontwall cover
9	060000	Handle
10	032300	Bolt Ø10
11	160000	Nut M-12
12	180000	Screw 12X30
13A	410000	Chassis NH-1
13B	420000	Chassis NH-2
14	290001	Wheel 4.00-8"
16	330000	Self-lubricated bushing
17	040000	Guiding axle
18	200000	Ring Ø25
20	270000	Wheel 3.50-8"
21	340000	Self- lubricated bushing with rim

